

# COINDIA EDUCATION CUM TRAINING CENTRE

## குறுகிய கால வேலைவாய்ப்பு பயிற்சிகள் - 1 மாத பயிற்சி - Full Time / Part Time

### On the Job Training in Modern Imported Machines

1. CNC மெசின் ஆப்பரேட்டர் கம் புரோகிராமர் (CNC Machine Operator cum Programmer)
2. கன்வென்சனல் மெசின் ஆப்பரேட்டர் (Conventional Machine Operator)
3. மின் மோட்டார் ரீவைண்டிங் (Electric Motor Rewinding)
4. CMM டிரைனிங் (Training in Co-ordinate Measuring Machine)
5. EDM டிரைனிங் (Training in Electric Discharge Machine)

## நீண்ட கால பயிற்சிகள் - 1 வருட பயிற்சி - Full Time / Part Time

1. Diploma in Tool & Die Design

## COINDIA தொழிற்பள்ளி பயிற்சிகள் (அரசு அங்கீகாரம் பெற்றது)

1. CNC Machine Operator cum Programmer - 1 வருடம்
2. CAD - Design & Drafting - 3 மாதங்கள்



## COINDIA CAD SOLUTIONS

### AutoCAD (60 Hrs)

Basics of Machine Drawing  
Orthographic Projections  
Isometric Drawing  
Bill of Materials  
GD & T Techniques

### UNIGRAPHICS (100Hrs)

Sketcher  
Solid Modeling  
Surface Modeling  
Assembly  
Detailing With GD&T Concepts

### SOLID EDGE (100 Hrs)

Sketcher  
Converting 2D to 3D  
Solid Modeling  
Surface Modeling  
Sheet Metal  
Assembly  
Detailing With GD&T Concepts

### Pro/ENGINEER (100 Hrs)

Sketcher  
Solid Modeling  
Surface Modeling  
Sheet Metal  
Assembly  
Detailing With GD&T Concepts

### NASTRAN (80 Hrs)

Theory of FEA  
Linear Static Analysis  
Nonlinear Static Analysis  
Normal Modes Analysis  
Buckling Analysis  
Heat Transfer Analysis  
Transient Dynamic Analysis

### MASTERCAM (60 Hrs)

G-codes & M-codes  
Programming methods  
Facing, Contouring  
Pocket Machining  
Canned cycles  
Drilling, Boring, Tapping  
Sub Programming

### ANSYS (80 Hrs)

Theory of FEA  
Structural Analysis  
Static, Dynamic  
Thermal Analysis  
Steady State, Transient  
Coupled Field Analysis  
Non-Linear Analysis

### UG MOLD WIZARD (40 Hrs)

Introduction to Mold design  
Project Initialize  
Mold Layout  
Parting & Core Cavity Extraction

Mold Base and Standard Parts  
Runner, Gate, Cooling Layout  
BOM Assembly Drawing

### UG NX CAM (60 Hrs)

Introduction to Manufacturing  
G Codes & M Codes  
Planer Milling  
Contour Milling

Simulation  
Post Processing

For Admission & More Details

**D. Rajaji**, Head Training and Development,

Mob: 97919 00725, Ph: 0422-4273775 e-mail: rajaji@coindia.in

**COINDIA**, 340-342, Avarampalayam Road, K.R. Puram, Coimbatore - 641 006. Web : www.coindia.in

# RAPID PRODUCT DEVELOPMENT CENTRE

*Looking for ...*

A faster method of developing cast parts?

Developing complex shaped cores which cannot be made by conventional methods?

A solution to produce cast parts in small qty economically?

Then COINDIA has solution. Just walk in with your CAD model and collect your casting in 5 days as schematically represented below.



RPT - EOSINT S750, Germany

## Time and Cost saving Advantages of Direct cast

Production of castings using Quartz mould and core with out any foundry patterns and core boxes.

Extremely complex geometries with undercuts are moldable.

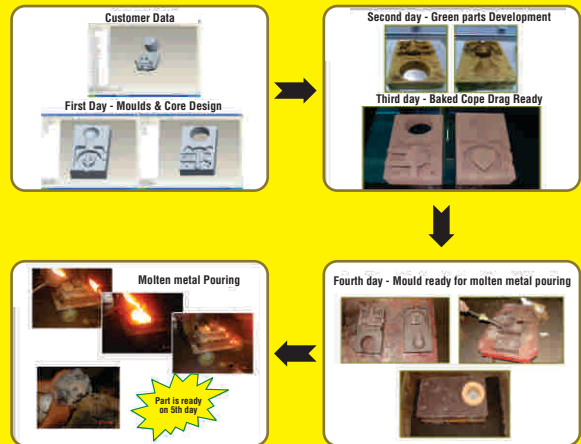
No draft angles required.

Design driven Manufacturing, No more compromising in design for foundry Castings.

Big opportunity of time saving. Client starts testing/using within one week time.

Greater Accuracy, Client able to make changes/fine tune very easily.

Possible to manufacture all Ferrous & Non-Ferrous alloy castings.



## Co-ordinate Measuring Machine (CMM)

ACCURATE, INDIA



Size : 600 x 1000 x 500  
Accuracy upto 10µ

MITUTOYO, JAPAN



Size : 500 x 700 x 400  
Accuracy upto 5µ

PROFILE PROJECTOR,  
PP 600V, INDIA



REVERSE ENGINEERING  
RENISHAW, LASER SCANNER, UK



*For your product development needs*

Director (Resources & Development)

Mobile : 96009 80316

Mail : iyyadurai@coindia.in

Engineer Development

Mobile : 96777 29001

Mail : rpt@coindia.in

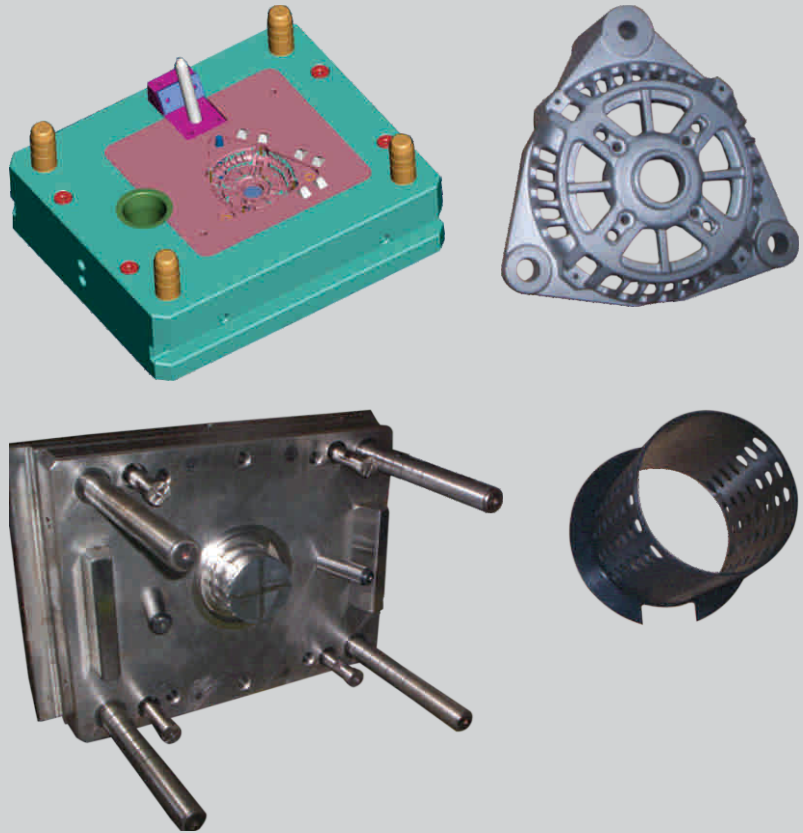
## COINDIA MODERN TOOLROOM

COINDIA MODERN TOOLROOM provides service to the industries by way of Design and Manufacturing of precision Press Tools, precision Die casting Dies, Plastic Moulds, Jigs and Fixtures and precision Machined Components for Aerospace Industries.

Our ToolRoom is equipped with the most advanced ToolRoom machineries from INDIA, GERMANY, SWITZERLAND, JAPAN and USA. The Manufacturing facilities are supported by a Design Center with the latest CAD and CAM softwares.

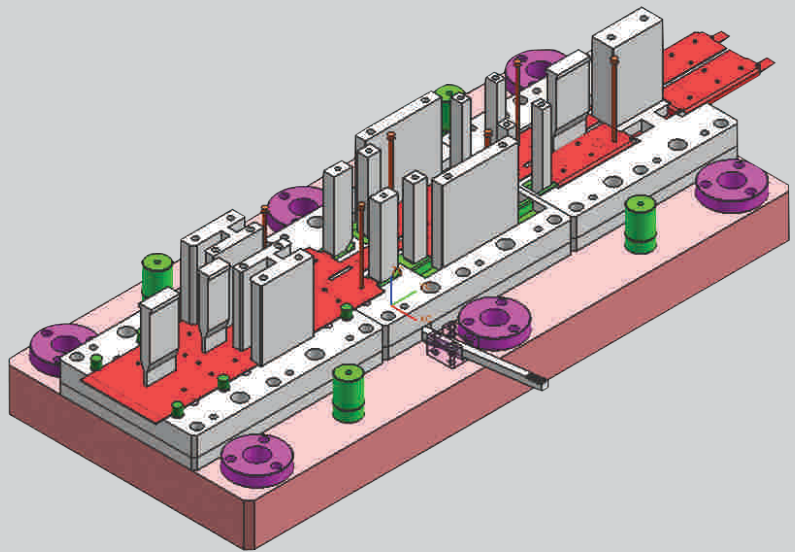
Our Engineering Team members have very rich experience in commercial ToolRoom in India and Abroad. Their experience range from 10 to 40 years and have excellent track in Designing, Manufacturing, Trouble shooting and Validating all types of Tooling.

Our philosophy is "DO IT RIGHT FIRST TIME" from design to proving.



### DESIGN & MANUFACTURING OF

- PRESS TOOLS
- PLASTIC MOULDS
- PRESSURE DIECASTING DIES
- JIGS & FIXTURES
- GAUGES
- HIGH PRECISION MACHINING PARTS
  - VMC - 3/4/5 AXIS
  - CNC - WEDM
  - CNC - EDM
  - JIG BORING
  - JIG GRINDING

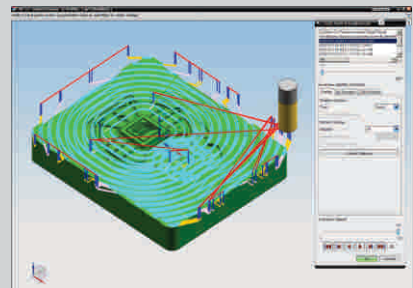
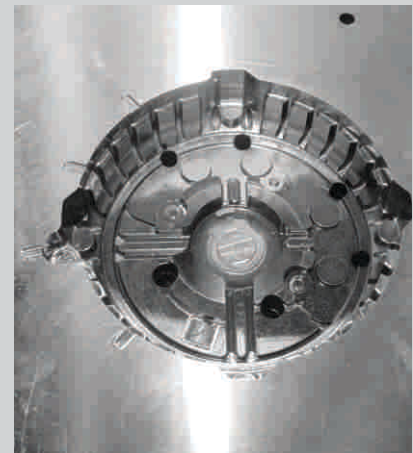


## PRODUCT DESIGN ENGINEERING

From Concept to component design, assembly, detailed design, with interference and tolerance check and detailed bill of material, we can cover the entire spectrum of services for your product. Furthermore with our knowledge in tooling and manufacturing services we can provide optimization of design for ease in manufacturing, manufacturing feasibility and meeting standards for quality and functionality thus avoiding any late surprises. Our successful design speaks for itself.

## TOOL DESIGN

- Design of press tools for sheet metal industries
  - Sheet metal die design for draw, trim, cam-trim-pierce, re-strike, and flanging operations
  - Tool design of Compound Tool, Combination Tool, Progressive Tool.
- Design of Plastic Moulds
  - Mould Design of Injection Moulds (2plate / 3plate / Hot Runner Moulds)
- Design of Die casting & Forging dies
- Design of Jigs & Fixtures for Automotive and Aerospace Industries
  - Welding fixture, Assembly fixture, Machining Fixture, Inspection Fixture, Drill Jig
- Extraction/splitting of core, cavity, sliders, angular cores, core pins and other details as per Mould Design.
  - Complete Assembly Design with Bill of material in 3D & 2D.
  - Detail drawings of core/cavity inserts for shop floor level management of manufacturing of the tool.
  - Plastic mould flow analysis.
  - Die-cast flow analysis on MAGMA for gates, runners & overflows for PDC.
  - Sheet metal forming simulation on Fast Form.
- Modifications and suggestions in 3D models with customer's approval so as to suit Mould making.



Our rich expertise aids in reducing tool cost Ease of manufacturing is considered during Tool Design with Time bound delivery schedules. Our ToolRoom patronizes latest softwares Pro-E, Master CAM, Unigraphics, Solid Edge & Mould Flow.



## Contact :

**D. Chandrasekhar**  
General Manager (Operations & Business Development)

Mob : +91 96777 75509  
E-mail : [dcsekar@coindia.in](mailto:dcsekar@coindia.in)

## COINDIA MODERN TOOLROOM

SF No. 771/8-B-Part, E&E Industrial Estate Campus, Avinashi Road, Civil Aerodrome Post, Coimbatore - 641 014.  
Ph : 0422-4270797, 4399161, Fax : 0422-4520035, Mob : 96777 75509, Web : [www.coindia.in/new](http://www.coindia.in/new)